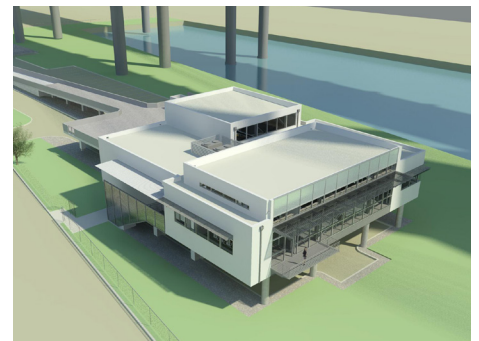
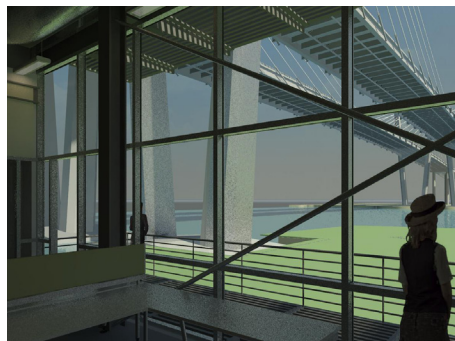
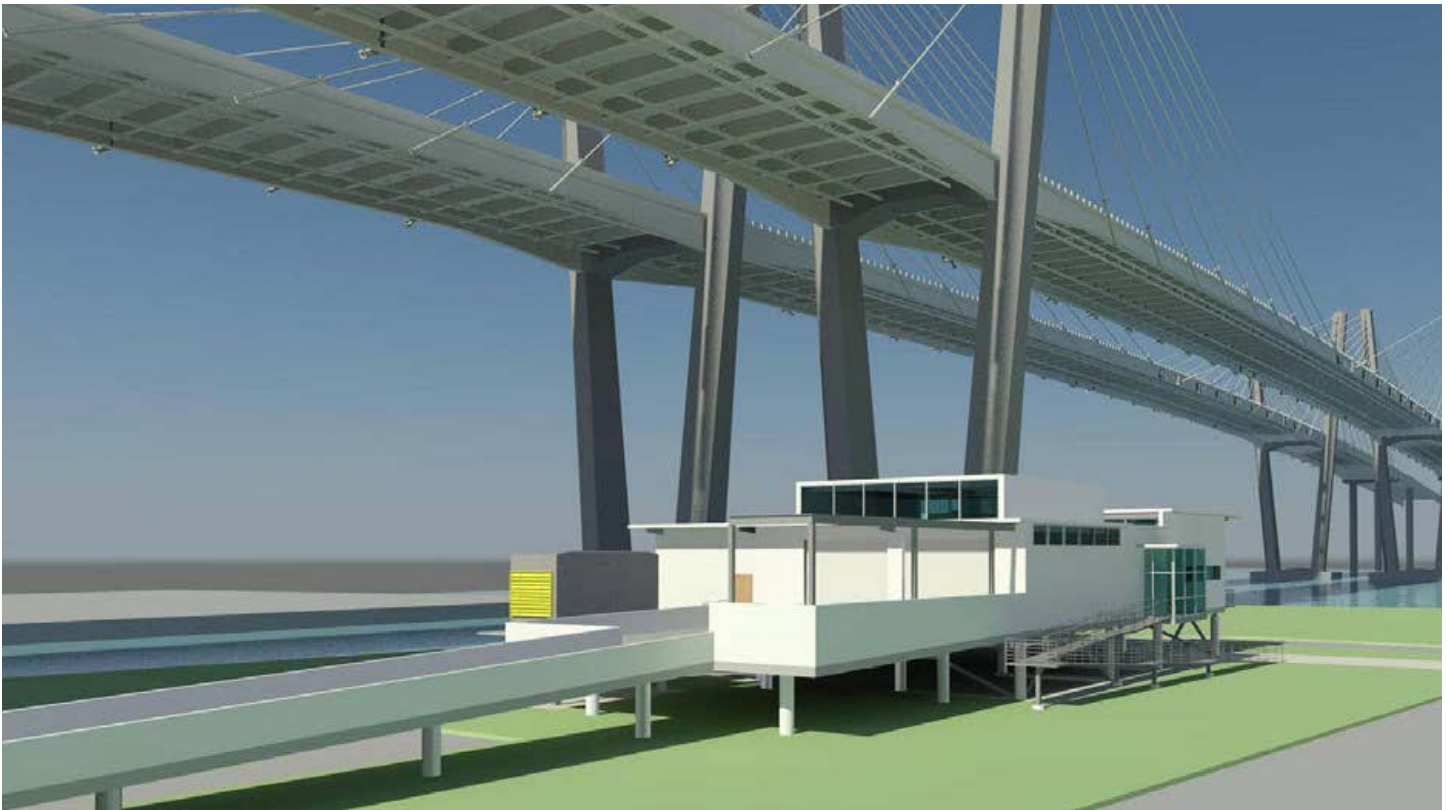




Goethals Bridge Replacement Project Developers Maintenance and Control Facility



CSR Construction Corp. of Nutley, New Jersey, is constructing the new **DMCF Developers Maintenance and Control Facility, at the Goethals Bridge Replacement Project in Elizabeth, NJ.** This building will house the developer's offices, maintenance vehicles and instrumentation and controls for the new Goethals Bridge. As part of the overall project the bridge will be a new twin-span structure and the first major, all-new bridge built in the region since the Verrazano-Narrows Bridge was completed in 1964. It will also be the region's first cable-stay bridge, with a distinctly modern look.

The \$1.5 billion project is a public-private partnership involving the Port Authority of New York and New Jersey and a consortium of private investors known as New York-New Jersey Link, which will finance and arrange the \$1.2 billion construction job, and then be paid back by the Port Authority with toll revenues spread over 35 years.

CSR Construction Corp. was awarded the project in April 2016 and is expected to complete the work by May of 2017.

